

# ALL AMERICAN®

OPERATOR'S MANUAL  
CROWLER™ CAN SEALER  
MODEL EL-DD300



19 Rancho Circle, Lake Forest, CA., 92630 ~ 949.387.5451 ~ [www.gsdraft.com](http://www.gsdraft.com)

## **Table of Contents**

Page 3	- Introduction & Getting Started
Page 4	- Cleaning & Maintenance
Page 5	- Daily Maintenance Schedule
Page 5	- How to Set Rollers to Home Position
Page 6	- Adjustments & Seam Gauge
Page 7	- Trouble Shooting
Page 8	- Parts Picture List
Page 9	- Parts List
Page 10	- Warranty Information

## **Parts Included**

- EL-DD300 Direct Drive Can Sealer
- Plastic Splash Guard (I ncludes):
  - Right Guard (D218A packed separate)
  - Left Guard (D218B packed separate)
  - Center Guard (D218C installed)
- Four Rubber Feet
- Seam Gauge for 300 Diameter Lid

## INTRODUCTION

Congratulations on your purchase of the All American EL-DD300 can sealer. This machine is NSF certified and comes with splash guard to help with cleanability which is required for that certification.

This can sealer was thoroughly inspected and tested at the factory before shipment. Immediately upon receipt, carefully check the can sealer for damage before using it. Do not operate the can sealer if it is damaged; call (920)-682-8627 for further instruction.

The EL-DD300 comes with the 300D Chuck and the D203 Base Plate. These are designed and set up to seal a 25.4 or 32oz Crowler® can. A sample can was used to set up the machine and was locked in place during shipping to help protect the machine. (Please note the can might look a little dented. This will not happen when you have a full can.) Prior to removing the container, lower and raise the base plate by turning the Can Lifter Handle as far as possible to the left and then back to the right a few times. Pay attention to the amount of pressure you have to apply to the Lifter Handle when locking the can into place. It is good to develop a feel for the amount of base plate pressure required to properly seal a can. Height adjustment can be made with by moving the Adjustable Base Arm (D212) up or down on the Wall Hook (D211) for 25.4, or 32 oz cans.

## GETTING STARTED

1. Remove bolts from underside of wooden shipping board that sealer is attached to.
2. EL-DD comes with rubber feet that can be installed on the bottom unthreaded holes next to the threaded bolt holes. It can also be attached to a flat surface using the four bolt holes to bolt down the sealer. Use the wooden shipping board as a template to mark and drill holes.
3. Connect plug to proper receptacle, either 120 or 240 volt depending on your machine.
4. Install the Right and Left Splash Guards by placing the metal pins on the guards into the pin holes on the frame. (See picture on front cover) Left side guard needs to close before closing the Right side.
5. Make sure the D222R pins are in the correct hole for sealing. If you are sealing a 25.4 or 32 oz can, both sides should be in the "2" hole. Pins are shipped in the "10" hole.
6. Make sure the Auto/Hand switch is turned to "Auto" mode. (Located next to start button)
7. Push in the button next to the side switch and hold (approximately three seconds) until it turns green. When it turns green, let go of the button.
8. Lower the Base Plate (D203) by turning the Can Lifter Handle (D100) as far as possible to the left and remove the test can. (The handle should be pointing straight towards you when you are facing the machine.)
9. To start sealing beer, place lid on filled can and set can on Base Plate (D203).
10. Raise can until it is clamped firmly between the Base Plate (D203) and Chuck (300D) by turning Can Lifter Handle (D100) as far as possible to the right until handle locks itself against the Frame (D210). Wipe off outside of can. The can is now ready to be sealed.
11. Push the green Start Button. The sealer will make one complete cycle and stop. **Never push the button without a can in sealing position as this will damage your chuck and rollers.**
12. When sealer is stopped, pull can lifter handle toward you to lower the base and remove can.  
NOTE: You can leave the splash guard closed when loading and unloading cans.

**CAUTION: DO NOT PUT ANY PART OF YOUR BODY BETWEEN THE CHUCK AND ROLLERS. FAILURE TO DO SO WILL CAUSE SERIOUS INJURY.**

## CLEANING AND MAINTENANCE

The following steps should be done daily to prevent build up of beer on the machine. Without proper cleaning the rollers will freeze up.

1. Remove plastic guards and wash with hot soapy water. They could also be placed in a dishwasher.
2. Wipe down entire machine with hot soapy water and dry.
3. Remove CY-18F and CS-18S Roller Pins with a flat head screw driver. Pull pins and seaming rollers out, wash with hot soapy water and dry.
4. Pull chuck out of machine and wash with hot soapy water and dry. (It is best to remove the chuck by pushing the top of the chuck stem with a screw driver and catching it below so it doesn't fall.)
5. Spray machine with a food safe sanitizing spray and wipe dry.

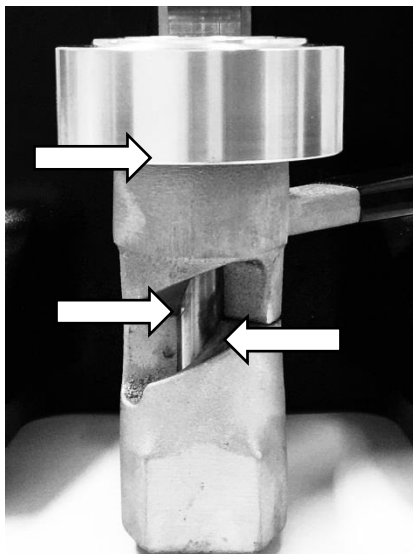
## MAINTENANCE

The following should should be checked after frequent use.

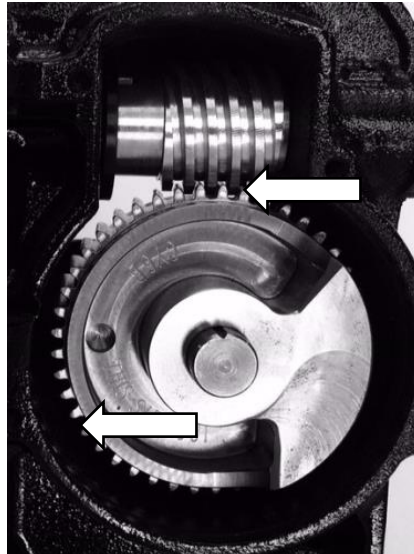
Without proper lubrication the machine could freeze up or be damaged.

1. Remove Base Plate and oil Ball Bearing on the underside with food grade 30W lube oil.
2. Remove Can Lifter Handle; oil stem and where handle comes in contact with frame. (Use food grade 30W oil)
3. Spread food grade white petrolatum grease liberally on all of the teeth of the Cam Worm Wheel located behind the Cam Worm Wheel Cover.
4. Spread food grade white petrolatum grease liberally on the teeth of the Bevel Gear located behind the Front Gear Cover.

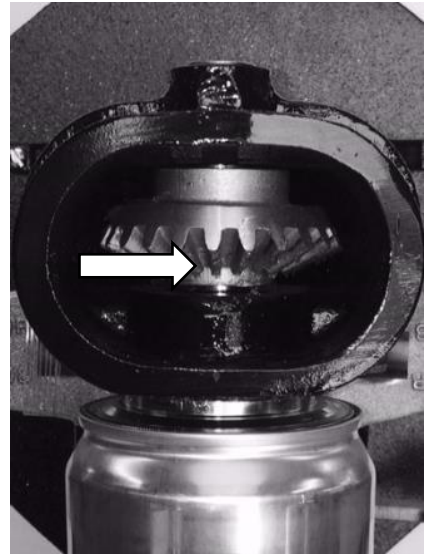
1 & 2



3



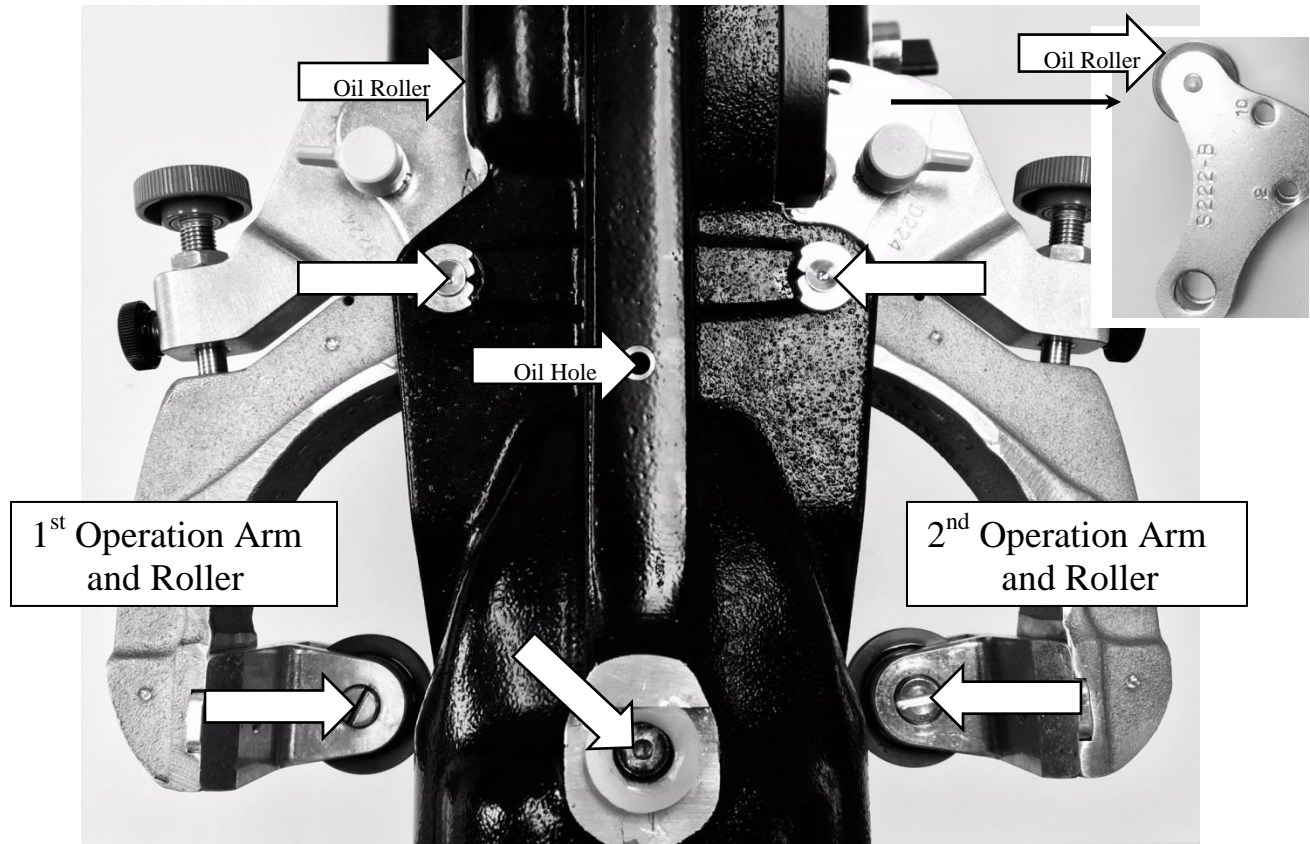
4



## Daily Maintenance Schedule:

Use a couple drops of food grade 30W lube oil at each arrow below.

Without proper lubrication the machine will freeze up or be damaged. If unit does freeze, turn switch to “Hand” position immediately and see Trouble Shooting Section on Page 7.



## How To Set Rollers to Home Position

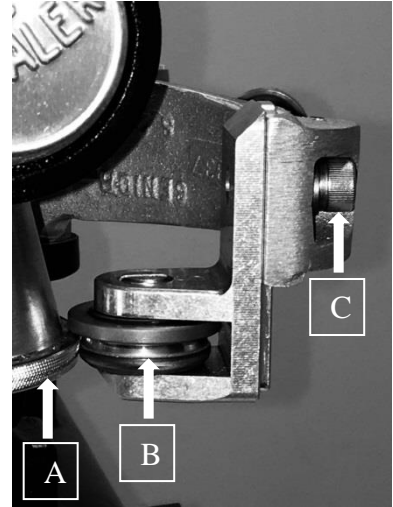
After repeated use the motor can become out of sync causing either the 1<sup>st</sup> or 2<sup>nd</sup> operation roller to be closer to the chuck than it should be. Do the following to fix:

1. Turn “Auto/Hand” switch to “Hand’ position. (The green light will turn off.)
2. Place an empty can with lid on the base plate and lock can into place with can lifter handle.
3. Press the Start button. (The arms will start to move.)
4. Hold Start button until the 2<sup>nd</sup> Operation Arm moves as far away from can as possible.
5. Stop pressing the button before the 2<sup>nd</sup> Operation Arm starts moving back toward the can.
6. Turn the switch back to “Auto” mode.
7. Press and hold Start button until light turns green. (Approximately three seconds.)



## ADJUSTMENTS & SEAM GAUGE

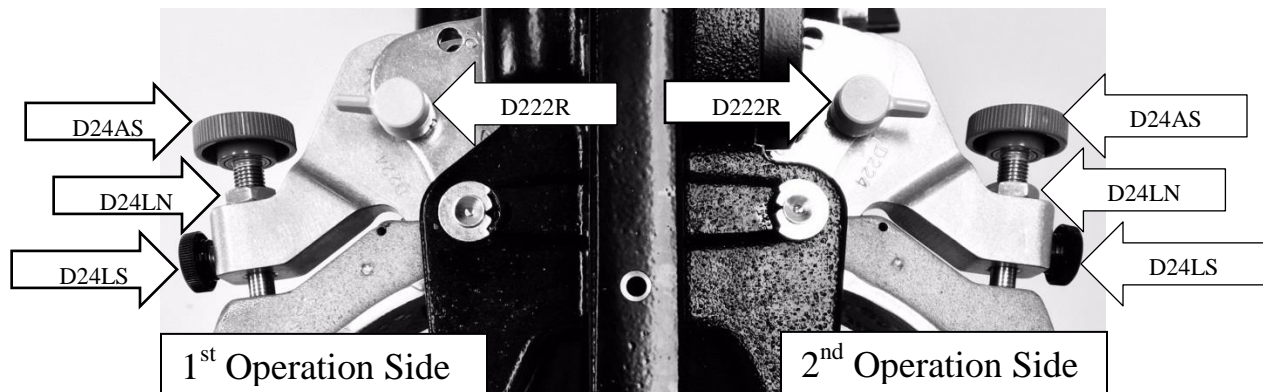
Check the adjustment of the Seaming Rolls occasionally. First check the roller height adjustment as follows: When Chuck (A in picture) is held up tightly against the Ball Bearing (S-201BB), the underside of the top flange on the Seaming Roller (B in picture) must fit closely on top of Chuck. If it doesn't, make adjustments by pushing the Cam Roller Lever (S-222B) toward Chuck until Seaming Roll touches the Chuck. Slightly loosen Screw (CY-9LSB) (C in picture), push down on Roller Bracket that contains Seaming Roller until top flange of Seaming Roller rests on top of Chuck. Now tighten Screw (CY-9LSB) **as tight as possible**.



This adjustment should be made on both 1<sup>st</sup> and 2<sup>nd</sup> Operation Rollers. After height adjustment has been made, use the Seam Gauge provided.

**Use the seam gauge as follows:** Remove the Rivet (D222R) on the 2nd Operation Cam Roller Lever (D222). (See picture below.) Run an empty can with lid in the machine to seal the 1st Operation. Remove the can and slip the groove marked "1<sup>st</sup>" over the seam. The seam will not fill the entire length of the groove but the Gauge should slip on far enough so that it touches the can cover. If groove in Gauge will not slip over seam, tighten 1<sup>st</sup> Operation Roller (CY-14B) by loosening Lock Nut (D24LN) and Black Thumb Screw (D24LS). Turn Red Adjusting Screw (D24AS) not more than a quarter turn to the right. If the groove in Gauge is loose on the seam, turn the Adjusting Screw to the left. Repeat above operation with another empty can and lid until Gauge fits over seam correctly. When first operation seam is correct, leave the Rivet (D222R) in the 1st Operation Lever. Place the other Rivet (D222R) in the "2" hole of the Second Operation Lever. Adjust the Second Operation Roller in the same manner as the 1st Operation Roller using the can that has a proper 1st operation roll seam. The groove in the Seam Gauge marked "2<sup>nd</sup>" is used when adjusting the 2nd Operation Roller (CY-15B). If the seam on 2<sup>nd</sup> Operation is too tight, you will need a new can and lid to repeat the 1<sup>st</sup> and 2<sup>nd</sup> operations. If seam on 2<sup>nd</sup> operation is too loose, you will be able to use the same can and lid.

**Be sure to tighten the Lock Nut and Screw (D24LN and D24LS) after adjusting each roller.**



***If it is necessary to operate sealer without a can in place, remove Chuck (D300) to prevent damage to it and Seaming Rollers.***

## **TROUBLE SHOOTING**

### **Can isn't spinning properly:**

Increase can lifter handle tension by adding a thin washer to the Base Plate Shaft (CY-32). Start with a 1/32" height washer and test a can. Add more if necessary.

### **Operation rollers aren't spinning properly:**

If the rollers aren't kept clean, over time buildup from certain liquids can form and lock the roller into place. Remove the Roller Bearing Lever and soak assembly in warm soap and water for 10 minutes to loosen buildup. Rinse clean and dry. Install Roller Bearing Lever, adjust and oil with food grade 30W lube oil.

### **Can lid is sticking to the chuck after sealing:**

Rollers are adjusted up too high and the metal is being folded over the chuck. See page 6 to properly adjust.

### **Can seal is leaking:**

Roller arms are set too loose. Check seam with seam gauge by using the instructions on page 6.

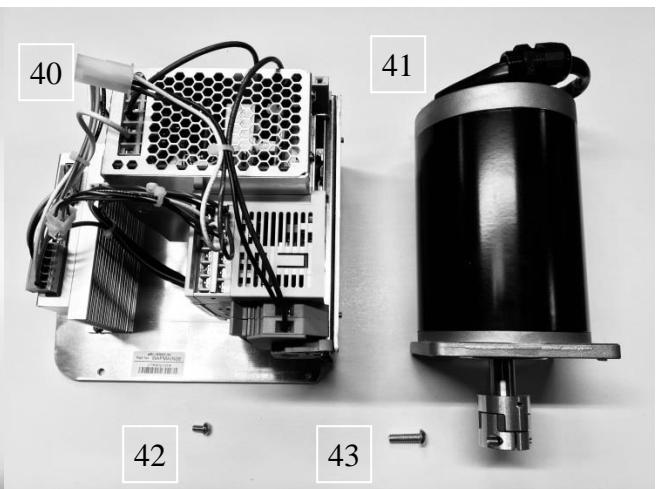
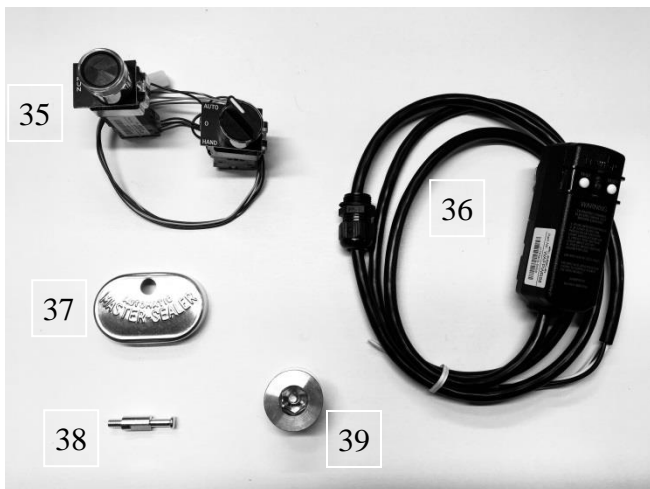
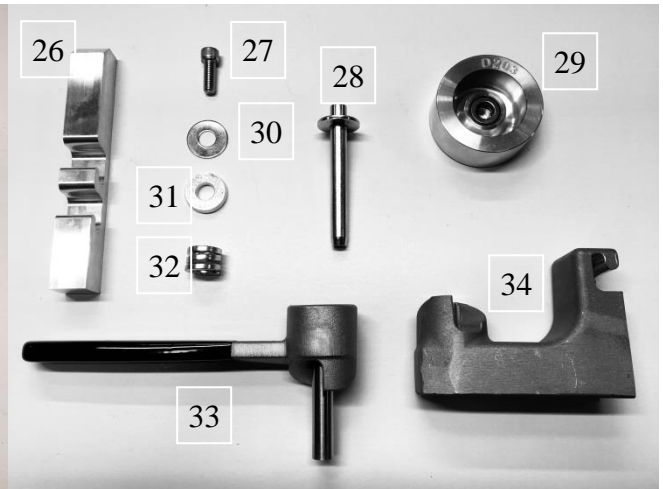
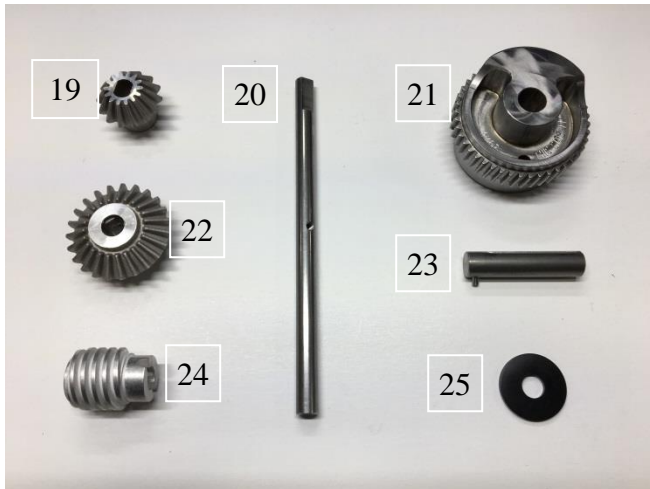
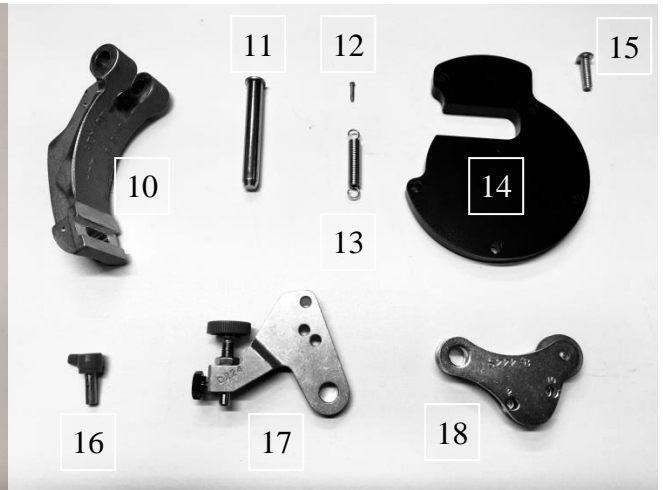
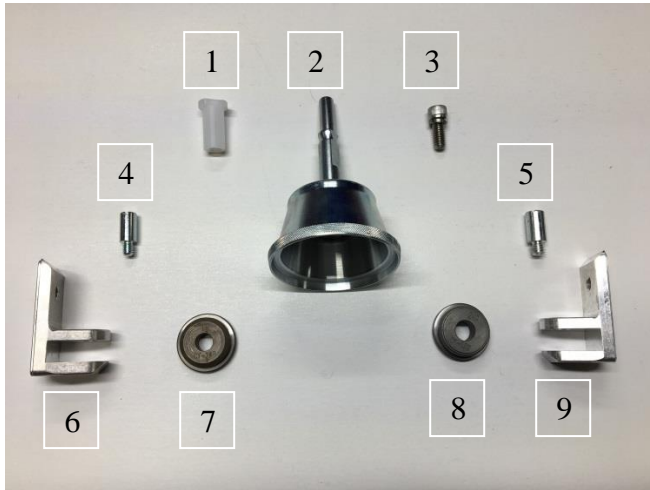
### **Seaming arms are out of sync:**

Machine needs to be put in the "Home" position where the 1<sup>st</sup> and 2<sup>nd</sup> Operation Roller Arms are as far away from the chuck as possible. See "How to Set Rollers to Home Position" on page 5.

### **Roller stops against can and motor makes a loud humming noise:**

1. See Page 5 to set Roller Arms to Home position.
2. Seaming Roller Arm is set too tight. See page 6 for adjustment.
3. Rollers are dirty or not properly lubricated. See Cleaning and Maintenance on Page 4 & 5.

# PARTS PICTURE LIST





## PARTS LIST

<u>PICTURE NUMBER</u>	<u>PART NUMBER</u>	<u>DESCRIPTION</u>
1	D219	Can Sealer Chuck Bushing
2	300D	Dome Can Chuck
3	CY-9LSB	Lock Screw
4	CY-18F	1st Operation Roller Pin
5	CY-18S	2nd Operation Roller Pin
6	CY-9FD	1st Operation Domed Roller Bracket
7	CY-14B	1st Operation Roller
8	CY-15B	2nd Operation Roller
9	CY-9SD	2nd Operation Domed Roller Bracket
10	S-208	Seaming Lever
11	CY-17	Seaming Lever Roller Pin
12	CY-1DS	Pin for Spring
13	CY-35	Seaming Lever Spring
14	D220	Direct Drive Gear Cover
15	90S	Motor/Cover Mount Screw
16	D222R	Pin w/ L-Knob
17	D224	Adjustment Lever Sub-Assembly
Includes	D24LN	-Lock Nut
	D24AS	-Red AdjustingThumb Screw
	D24LS	-Black Locking Thumb Screw
18	D222	Cam Roller Sub-Assembly
19	S205	Bevel Pin Gear
20	D225	Direct Drive Shaft
21	CY-6B	Cam Worm Wheel
22	CY-4	Bevel Gear
23	CY-26	Worm Wheel Shaft
24	CY-7	Worm Gear
25	CY-25W	Worm Shaft Washer
26	D211	Wall Hook
27	D217	3/8-16 x 1" S.H.C.S.
28	CY-32	Base Plate Shaft
29	D203	Direct Drive Base Plate
30	.125HW	1/8" Height Washer
31	.250HW	1/4" Height Washer
32	CY-34	Compression Spring
33	D100	Can Lifter Handle
34	D212	Adjustable Base Arm
35	D301	Button/Switch Assembly
36	D302	GFI Cord Assembly
37	CY-65	Front Cover Guard
38	D214	Guard Support Pin
39	D215	High Pressure Plug
40	D303	Control Panel Assembly
41	D300M	Direct Drive Motor
42	79	Panel Mount Screw
43	90S	Motor/Cover Mount Screw

# **ALL AMERICAN EL-DD300 DIRECT DRIVE CAN SEALER LIMITED WARRANTY**

This quality All American Can Sealer is designed and manufactured to provide many years of satisfactory performance under normal use. Wisconsin Aluminum Foundry guarantees to the original owner that should there be any defects in material or workmanship during the first year after purchase, we will repair or replace it, at our option. This warranty does not apply to damage caused by shipping. To obtain service under the warranty, please do the following:

- 1) Call the Customer Service Department to obtain a Return Authorization (RA) Number. Items returned without a Return Authorization Number will be refused.
- 2) Return can sealer, shipping prepaid with sales receipt, RA Number and a description of the claimed defect to:

**WISCONSIN ALUMINUM FOUNDRY CO., INC.  
CONSUMER PRODUCTS DIVISION  
1931 SOUTH 14<sup>th</sup> STREET / PO BOX 246  
MANITOWOC, WI 54220**

**PHONE: 920-682-8627 FAX: 920-682-4090**

Return transportation will be prepaid on all can sealers under warranty. Repairs made after the warranty has expired will be billed at the current repair costs.

We want you to obtain maximum enjoyment from using this quality can sealer and we ask that you take the time to read and follow the operating instructions. Failure to follow instructions, damage caused by improper replacement parts, abuse, or misuse will void this warranty.

This warranty gives you specific legal rights, and you may also have other rights which vary from state to state. This is Wisconsin Aluminum Foundry's guarantee to you and is being made in place of all other express warranties.

**Important - please read: Any alterations, modifications or changes of any type made to the can sealer or to any component thereof will void this warranty.**